

Cherry Blossom Road, Beechwood

£220,000

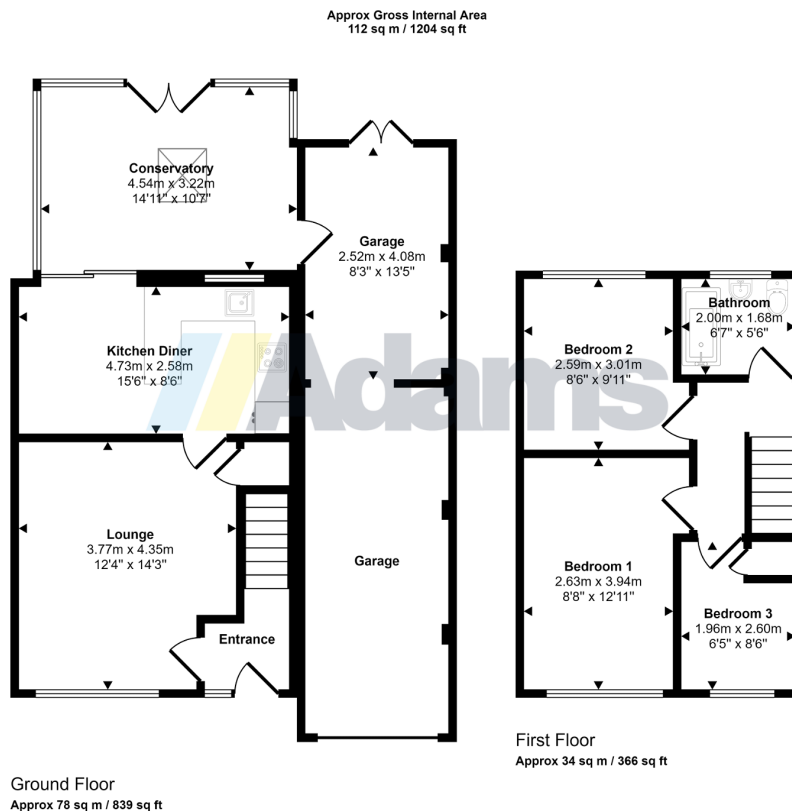
3 1 1



****SEMI-DETACHED HOUSE. THREE BEDROOMS. MODERN KITCHEN & BATHROOM. LARGE GARAGE. SPACIOUS DRIVEWAY. LANDSCAPED REAR GARDEN. TENURE: FREEHOLD****

Key Features

- EPC Rating: C Council Tax Band: C Tenure: Freehold
- Modern Fitted Kitchen and Bathroom
- Large Garage and Ample Driveway Parking
- Ideal Family Home
- Three Bedrooms
- Well Presented Throughout
- Beautifully Landscaped Rear Garden
- Sought After Location



This floorplan is only for illustrative purposes and is not to scale. Measurements of rooms, doors, windows, and any items are approximate and no responsibility is taken for any error, omission or mis-statement. Icons of items such as bathroom suites are representations only and may not look like the real items. Made with Made Snappy 360.